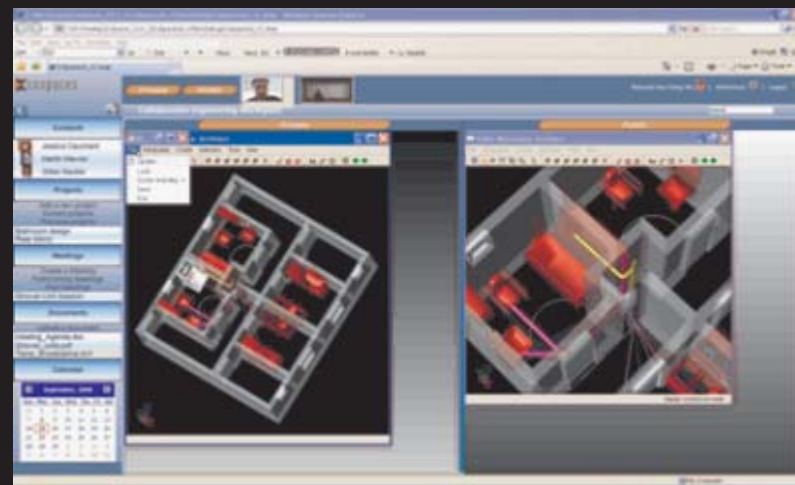


CoSpaces Portal

The CoSpaces portal is now complete and provides an intuitive interface for team working. The portal provides access to all underlying CoSpaces functionalities, such as group management, knowledge support, private and public workspaces, dynamic session management, and secure access to data.



Innovative Collaborative Work Environments For Design And Engineering



CoSpaces @ ICE 2008 Conference Lisbon Portugal 23-25 June 2008

CoSpaces played a very active role in this year's ICE Conference. Our technical director was invited to give a keynote speech and we also hosted a series of awareness raising and training sessions on collaborative working, CoSpaces technologies, results and business benefits. The response and feedback we received from the Conference participants was extremely positive, with a great deal of interest being voiced.

CoSpaces Events

- ICE 2008 23-25 June 2008 Lisbon Portugal
- BIPS Conference 1-2 September 2008 Nyborg Denmark
- CSCW 8-12 November 2008 San Diego USA

Further CoSpaces event details are posted at: www.cospaces.org/events.htm

Articles newsletters & videos on CoSpaces technologies, as well as other public materials

are now available for download at: www.cospaces.org/downloads.htm

Coordinator's Message

Product innovation is a never-ending challenge in today's markets. Global competitors can enter markets more easily than ever before making product differentiations through innovation, quality, reliability and pricing, essential for the continued growth of many businesses today. Much has been written about innovation best practice and how to create engineering environments that are conducive to innovation and creativity. A key theme that appears again and again in innovation best practices is 'collaboration'. The most innovative companies have learned that successful innovation is a "team sport". People innovate best when they collaborate. Ideas from one engineer trigger further or new ideas from others, and eventually a collaborative engineering team selects and combines the best of all ideas to create true product innovation. It is the promise of enabling greater innovation through improved collaboration that makes CoSpaces technologies an important weapon for companies competing in today's global markets.

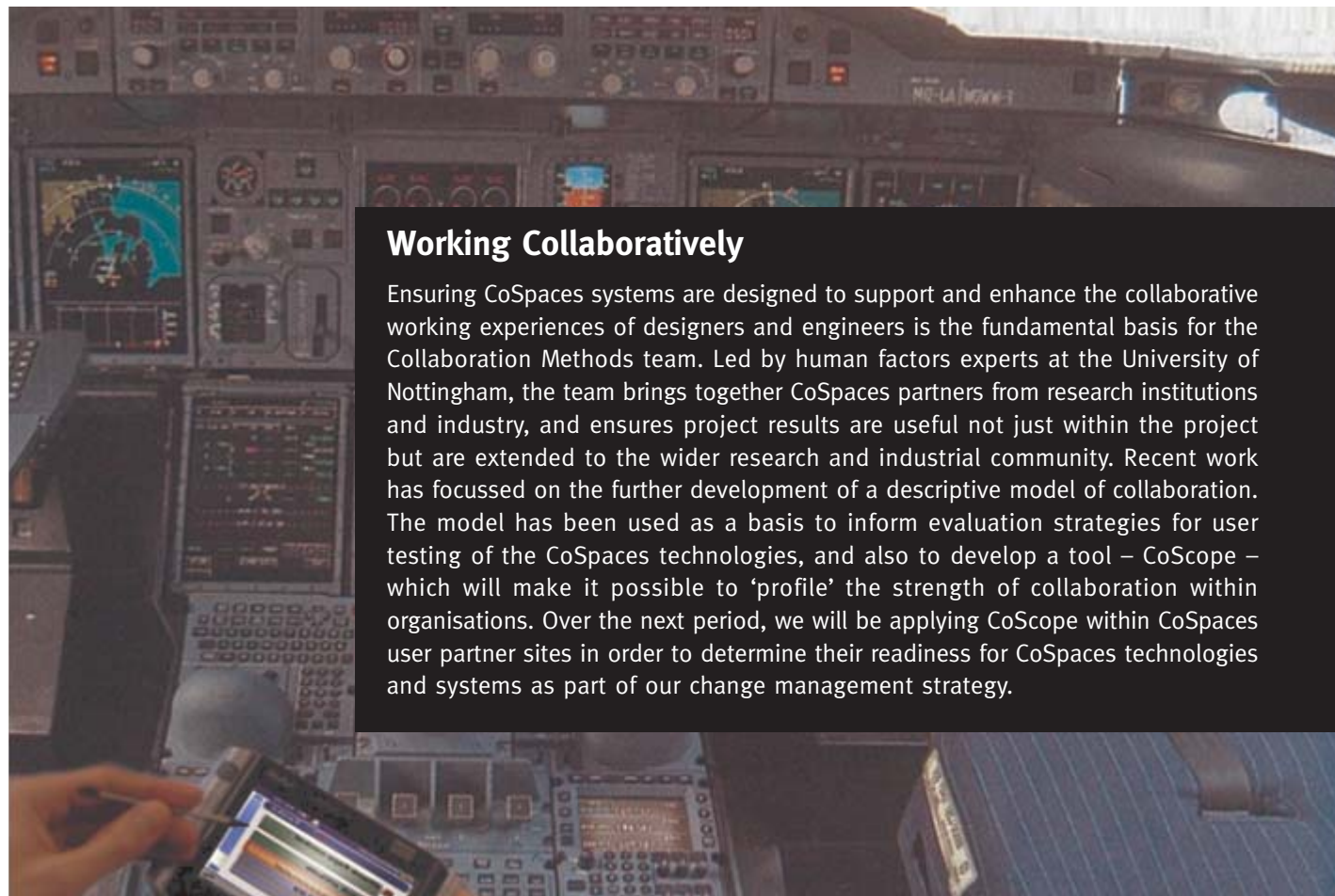


CoSpaces Project Coordinator
 Scott Hansen
 The Open Group
 Tel: +32 2 675 1136
 Fax: +32 2 675 7721
 Email: s.hansen@opengroup.org

Business Innovation Office Manager
 Simon Hardiman
 CARSA
 Tel1: +44 (0)7726 865 139
 Tel2: +34 600 460 372
 Email: shardiman@carsa.es



Find out more by visiting our website at www.cospaces.org
 Scott Hansen
 The Open Group
 CoSpaces Project Coordinator



Working Collaboratively

Ensuring CoSpaces systems are designed to support and enhance the collaborative working experiences of designers and engineers is the fundamental basis for the Collaboration Methods team. Led by human factors experts at the University of Nottingham, the team brings together CoSpaces partners from research institutions and industry, and ensures project results are useful not just within the project but are extended to the wider research and industrial community. Recent work has focussed on the further development of a descriptive model of collaboration. The model has been used as a basis to inform evaluation strategies for user testing of the CoSpaces technologies, and also to develop a tool – CoScope – which will make it possible to ‘profile’ the strength of collaboration within organisations. Over the next period, we will be applying CoScope within CoSpaces user partner sites in order to determine their readiness for CoSpaces technologies and systems as part of our change management strategy.

CoSpaces Co-located Workspace

The first prototype of the CoSpaces Co-located Workspace has been implemented and evaluated by industry partners from the construction and automotive industries. This workspace allows clients, project managers and engineers to connect to a common shared space to assess designs from their own viewpoints, whilst they are located in the same room. Each team member can interact with the shared virtual model via their own laptop, suggest changes to the model or make interactive design changes in real-time. The immersive interface within the co-located workspace for building construction allows wheel chair users to assess proposed building designs to ensure accessibility issues are properly addressed.

CoSpaces Distributed Workspace

The first prototype of the Distributed Workspace has been implemented and evaluated by industry partners from the aerospace and automotive industries. This workspace enables collaborative working by teams at different geographical locations, and has already been integrated within the overall CoSpaces framework allowing users to set-up, join and close meetings with access to the key CoSpaces service modules.



The multi-screen set-up available within the co-located workspace allows teams to visualise different types of design data concurrently on various displays.



CoSpaces Software Installations at Two Automotive End-User Sites in Hungary



PANAC-Győr – Automotive Cluster

VARINEX – Component Manufacturer



CoSpaces Collaborative Software Framework

The CoSpaces Collaborative Software Framework provides the necessary software components, services and tools to support the easy creation and use of co-located, distributed and mobile collaborative workspaces. In the last 6 months, the first version of the framework has been successfully implemented at several test sites. Our partners have analysed both the test results and the technical requirements of our different users, with a view to improving the Framework. Installation packages have been created to aid the installation of all required software components at different locations. The server part of our Software Framework runs on a central server and includes the portal, the collaboration broker, dynamic session management, knowledge support and positioning and identification modules. The client part includes the application controller and a new component – resource management – that enables teams to create a data space for secure data sharing during specific collaborative activities.

Current work is focusing on improving the layout and usability of the CoSpaces Portal, integrating the security infrastructure into the Framework to reflect requirements on trust, confidentiality and technical restrictions at local sites, and on further improvements and refinement of the Framework itself, in close collaboration with our end users.



CoSpaces Mobile Workspace

The Mobile Workspace enables mobile participants, such as technicians, to interact with experts for advice on faultfinding and repair. The first prototypes are complete and include a position and identification module, knowledge support and an Augmented Reality (AR) viewer. The AR viewer can run on an ultra mobile computer (UMC) or on an HMD.